



**816 Ruthven Street Kearneys Spring QLD**

4  1  7 

This solid-as split level family home has plenty on offer and sits on a 627m2 block in a prime, and very central, location in popular Kearneys Spring. You're just 400m from Nell E. Robinson park, 1km from Toowoomba Kmart Plaza, 3kms from USQ and in the, very desirable, school catchment for Middle Ridge State School and Centenary Heights High School.

Moving inside the home feels really spacious and features, on level 1, a huge family kitchen, off the kitchen is an equally spacious meals/dining area (great for a big family) and there is an inviting living space that opens out to the front patio. Upstairs on level 2 are three good sized bedrooms with robes and the family bathroom has a separate shower and tub. All the living spaces have

**Type** : House  
**Land Size** : 627 sqm  
**View** : <https://www.therealestatepeople.com.au/8278691>

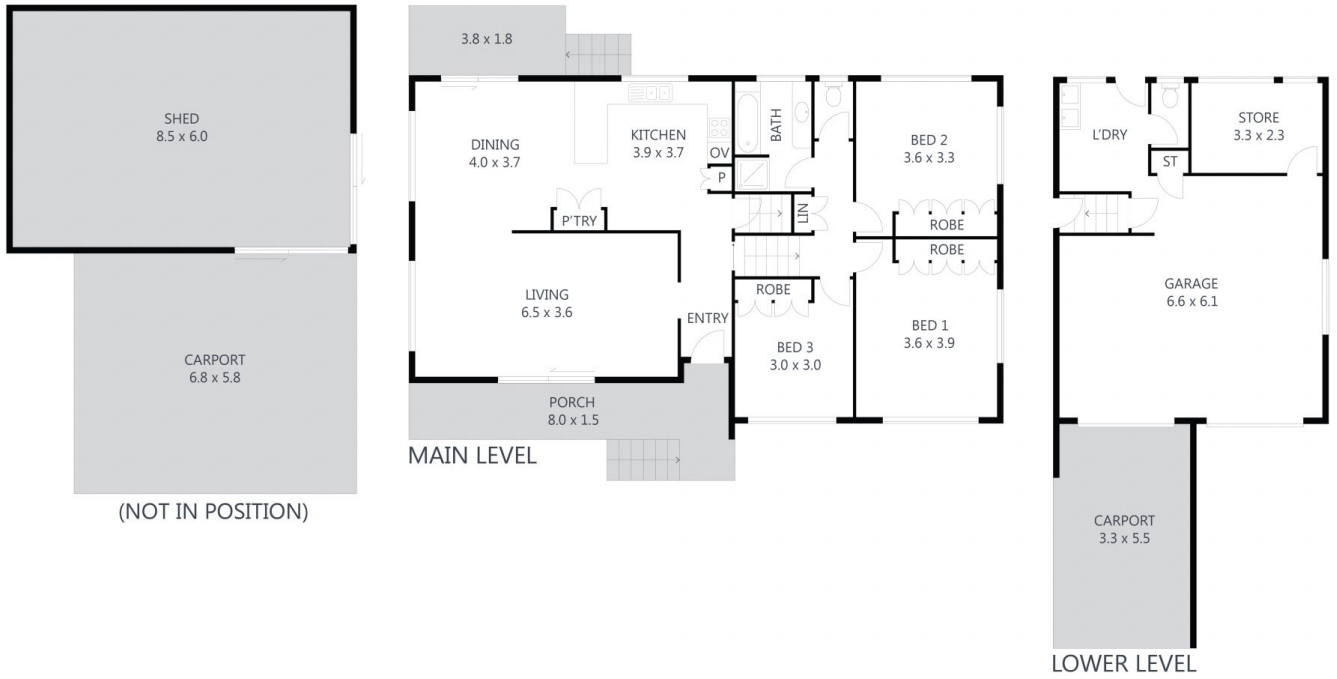


**Andrew Smith**  
07 4633 8899



**Rach Hinz**  
07 4633 8899

[For full version visit the website](https://www.therealestatepeople.com.au)



## 816 Ruthven Street, Kearneys Spring

Every effort was made to ensure the accuracy of this floor plan. However, all measurements in this floor plan are approximate and should only be used for representational purposes. This floor plan was produced by **SK MEDIA**



INTERNAL:	170m <sup>2</sup>
EXTERNAL:	132m <sup>2</sup>
TOTAL:	302m <sup>2</sup>

3	
1	
7	

